

PLL Tool Kit™ For Synthesizers

- Unit can be mounted directly on to the fixture and clamped without requiring any solder attachment to the fixture.
- All ports, other than programming ports are provided with SMA female connectors.
- Programming ports are hard wired using a flexible cable with matching connector for direct connection to the parallel port of the PC.
- A floppy disk containing an executable file is also provided along with the fixture.
- Step by step instructions are given in the menu to help set the different parameters like step size, reference frequency, frequency increment and output frequency.
- The fixtures have built-in power supply filtering.
- The fixtures are rugged in construction and reliable.



Available for package styles, 124SL, 192 and 197



192



124SL

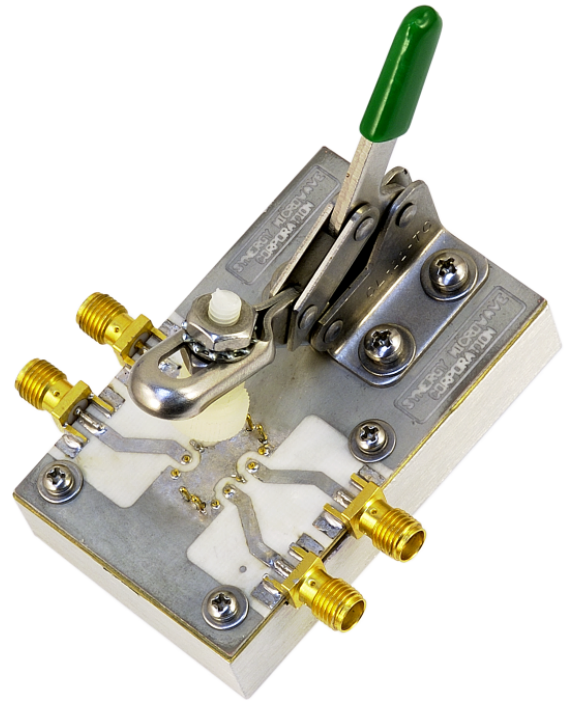


197

TEST FIXTURES

Quick Test™

-
- Easy to use.
 - Suitable for high volume testing.
 - Compatible with different outlines of different pin layout.
 - The fixtures are rugged in construction and reliable.
 - Low cost.
-



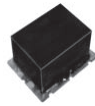
Available for package styles, 134, 134J, 152, 133, 159



134



134J



152



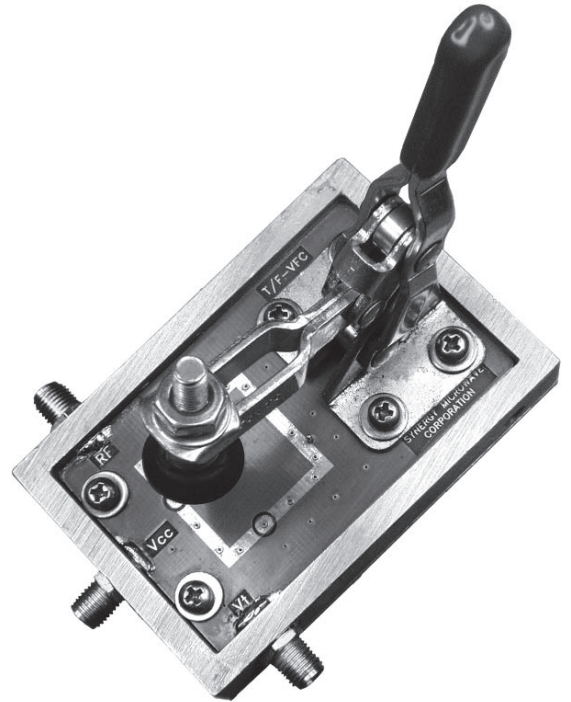
133



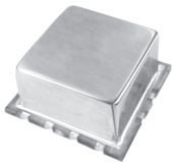
159

VCO Quick Test™

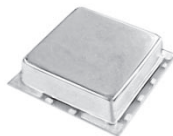
- Unit can be mounted directly on to the fixture and clamped without requiring any solder attachment to the fixture.
- All ports are provided with SMA female connectors.
- Suitable for high volume testing.
- The fixtures are rugged in construction and reliable.
- Low cost.



Available for package styles 124S, 124SL, 165S, 174



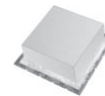
124S



124SL

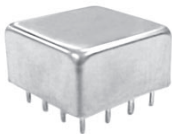


165S

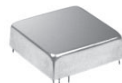


174

Also available for through hole package styles 124 and 165 without the clamp.



124



165